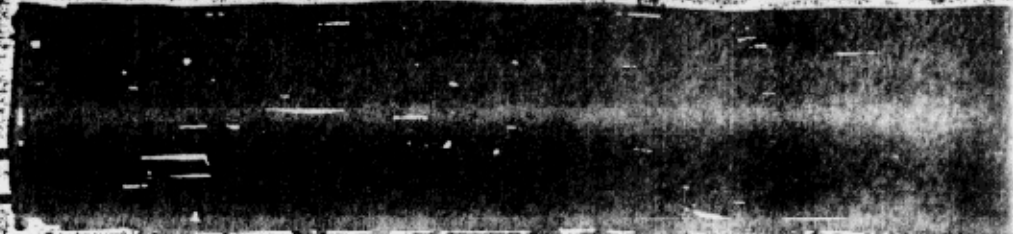


HEADQUARTERS ARMY AIR FORCE



Handwritten scribble or signature in the top left corner.



Air Accident Report on Flight
Proving Ground, New Mexico

D333.5 ID (18 Jul 47)

1st Ind

HL, Air Material Command, Wright Field, Ohio, 15 July 1947

TO: Commanding General, Army Air Forces, Washington 25, D.C.

HL, AIR DEFENSE COMMAND, New York

ATTN: AG/AS-2

Forwarded for your information.

FOR THE COMMANDING GENERAL

Signature
K. F. SWINNEY
Lieutenant General, U.S.A.
Commanding

Handwritten notes:
001
002
003
004
005
006
007
008
009
010
011
012
013
014
015
016
017
018
019
020
021
022
023
024
025
026
027
028
029
030
031
032
033
034
035
036
037
038
039
040
041
042
043
044
045
046
047
048
049
050
051
052
053
054
055
056
057
058
059
060
061
062
063
064
065
066
067
068
069
070
071
072
073
074
075
076
077
078
079
080
081
082
083
084
085
086
087
088
089
090
091
092
093
094
095
096
097
098
099
100

Handwritten signature: William C. R.
Lt. Colonel, USAF
Chief, Bureau of Engineering
Office, Air Materiel Command

~~TOP SECRET~~ H. G. [signature]

1. As ordered by Presidential Directive, dated 9 July 1947, a preliminary investigation of a recovered "Flying Disc" and remains of a possible second disc, was conducted by the senior staff of this command. The data furnished in this report was provided by the engineer staff personnel of T-2 and Aircraft Laboratory, Engineering Division T-3. Additional data was supplied by the scientific personnel of the Jet Propulsion Laboratory, CII and the Army Air Forces Scientific Advisory Group, headed by Dr. Theodore von Karman. Further analysis was conducted by personnel from Research and Development.

2. It is the collective view of this investigative body, that the aircraft recovered by the Army and Air Force units near Victorio Peak and Socorro, New Mexico, are not of US manufacture for the following reasons:

a. The circular, disc-shaped "platform" design does not resemble any design currently under development by this command nor of any Navy project.

b. The lack of any external propulsion system, power plant, intake, exhaust either for propeller or jet propulsion, warrants this view.

c. The inability of the German scientists from Fort Bliss and White Sands Proving Ground to make a positive identification of a secret German V weapon out of these discs. Though the possibility that the Russians have managed to develop such a craft, remains. The lack of any markings, ID numbers or instructions in Cyrillic, has placed serious doubt in the minds of many, that the objects recovered are not of Russian manufacture either.

a. Upon examination of the interior of the craft, a compartment exhibiting a possible atomic engine was discovered. At least this is the opinion of Dr. Oppenheimer and Dr. von Karman. A possibility exists that part of the craft itself comprises the propulsion system, thus allowing the reactor to function as a heat exchanger and permitting the storage of energy into a substance for later use. This may allow the converting of mass into energy, unlike the release of energy of our atomic bombs. The description of the power room is as follows:

- (1) A doughnut shaped tube approximately thirty-five feet in diameter, made of what appears to be a plastic material, surrounding a central core (see sketch in TAB 1). This tube was translucent, approximately one inch thick. The tube appeared to be filled with a clear substance, possibly a heavy water. A large red center inside the tube, was wrapped in a coil of what appears to be of copper material, ran through the circumference of the tube. This may be the reactor control mechanism or a storage battery. There were no moving parts discernable within the power room nor in

TSEP

~~TOP SECRET~~
~~CONFIDENTIAL~~
Maj. J. J. [unclear]

TS
Priority 1A
001
002

- (2) This estimation of a electrical potential is believed to be the primary power to the reactor, though it is only a theory at present. Just how a heavy water reactor functions in this environment is unknown.
- (3) Underneath the power plant, was discovered a ball-turret, approximately ten feet in diameter. This turret was encompassed by a series of gears that has a unusual ratio not known by any of our engineers. On the underside of the turret were four circular cavities, coated with some smooth material not identified. These cavities are symmetrical but seem to be movable. Just how is not known. The movement of the turret coincides with the dome-shaped copula compartment above the power room. It is believed that the main propulsion system is a bladeless turbine, similar to current development now underway at AMC and the Mogul Project. A possible theory was devised by Dr. August Steinhauff (a Paperclip scientist), Dr. Werner von Braun and Dr. Theodore von Karman: as the craft moves through the air, it somehow draws the oxygen from the atmosphere and by a induction process, generates a atomic fusion reaction (see TAB 2). The air outside the craft would be ionized, thus propelling the craft forward. Coupled with the circular air foil for lift, the craft would presumably have an unlimited range and air speed. This may account for the reported absence of any noise and the apparent blue flame often associated with rapid acceleration.
- (4) On the deck of the power room there are what resembles typewriter keys, possibly reactor/powerplant controls. There were no conventional electronics nor wiring to be seen connecting these controls to the propulsion turret.

e. There is a flight deck located inside the copula section. It is round and domed at the top. The absence of canopy, observation windows/blisters, or any optical projection, lends support to the opinion that this craft is either guided by remote viewing or is remotely controlled

- (1) A semi-circular photo-tube array (possibly television).
- (2) Crew compartments were hermetically sealed via a solidification process.
- (3) No weld marks, rivets or soldered joints.
- (4) Craft components appear to be molded and pressed into a perfect fit.